

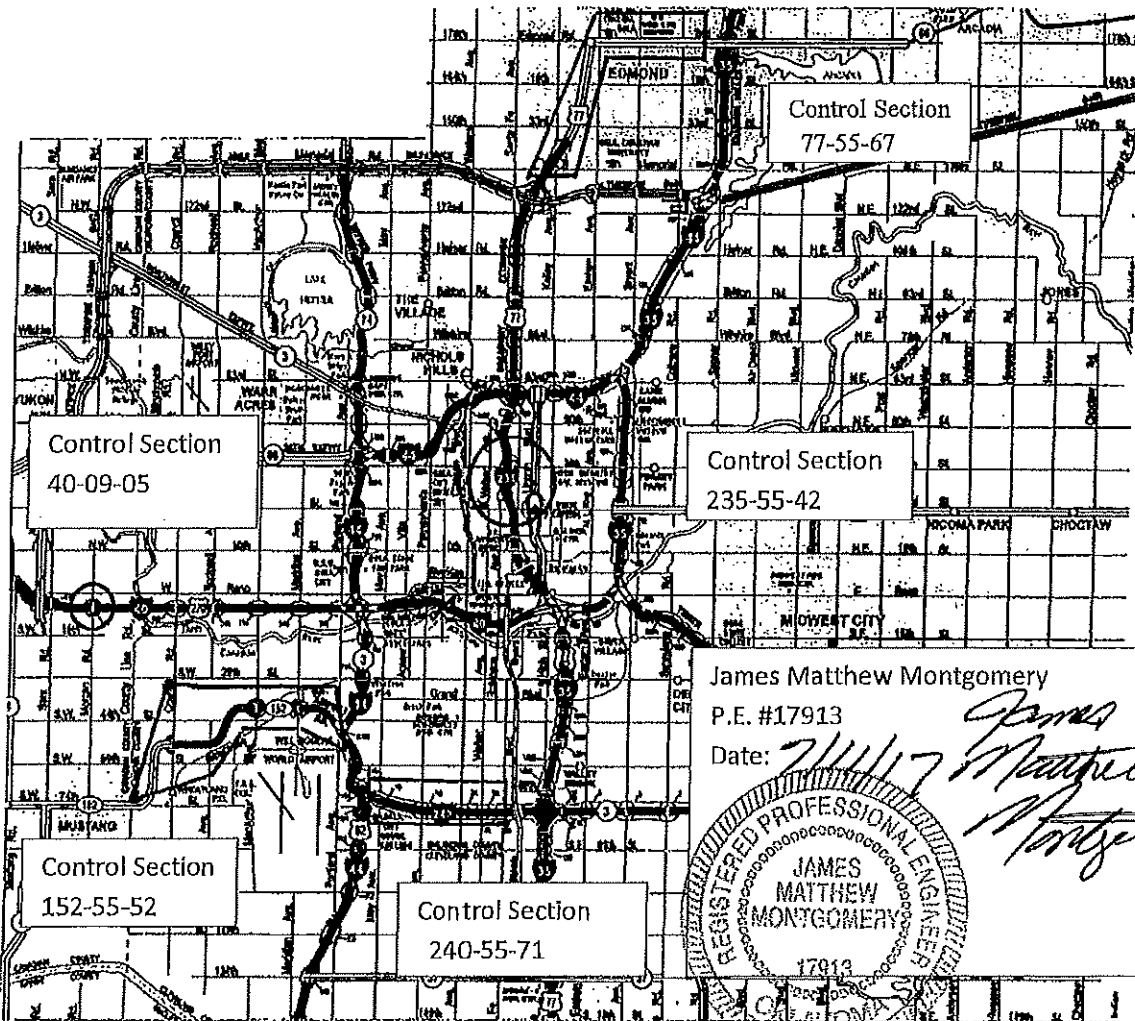
STATE OF OKLAHOMA  
DEPARTMENT OF TRANSPORTATION

PLAN OF PROPOSED  
HIGHWAY STRIPING

Federal Aid Project No. HSIPG-255F(449)TR JP # 33255(04)

CANADIAN & OKLAHOMA COUNTIES

CONTROL SECTION NOS. 40-09-05, 235-55-42, 240-55-71, 77-55-67, 152-55-52



2009 Oklahoma Standard Specifications for Highway Construction govern, approved by the U.S. Department of Transportation, Federal Highway Administration on January 4, 2010.

001

Index of Sheets

001	TITLE SHEET
002	INDEX OF SHEETS
AT01-AT03	SUMMARY OF PAY QUANTITIES AND NOTES (STRIPING)
T001-T002	SUMMARY SHEETS I-40 AND MORGAN ROAD INTERCHANGE
T003-T005	SUMMARY SHEETS I-235
T006-T007	SUMMARY SHEETS I-240
T008-T011	SUMMARY SHEETS US-77
T012-T014	SUMMARY SHEETS SH-152
T015-T025	SUMMARY SHEETS PREFORMED ROUTE SHIELD PAVMENT MARKERS

THE FOLLOWING STANDARD DRAWINGS WILL BE REQUIRED:

PM1-1-02	TCS1-1-01	TCS7-1-02
PM2-1-01	TCS2-1-00	TCS8-1-00
PM3-1-02	TCS3-1-02	TCS9-1-01
PM4-1-01	TCS4-1-01	TCS11-1-01
PM5-1-00	TCS5-1-00	
PM6-1-00	TCS6-1-02	

PAY QUANTITY SCHEDULE				
0300 TRAFFIC CONTROL				
PAY ITEM	CODE NO.		UNIT	QUANTITY
876(A)	8482	(PL)TRUCK MOUNTED ATTENUATOR (TC-52,70,76,77)	SD	20.00
880(J)	8905	CONSTRUCTION TRAFFIC CONTROL (TC-25)	LSUM	1.00
880(L)	8911	TRAFFIC SURVEILLANCE, POLICE (TC-65,70)	HR	80.00
882(A)	8306	PORT. CHANGEABLE MESSAGE SIGN (SP-1)(TC-52,84,85)	SD	20.00

PAY QUANTITY SCHEDULE				
0301 TRAFFIC SIGNING & STRIPING				
PAY ITEM	CODE NO.		UNIT	QUANTITY
855(B)	8824	TRAFFIC STRIPE(PLASTIC)(SYMBOLS) (SP-3)	EA	76.00
856(A)	8530	TRAFFIC STRIPE (MULTI-POLYMER)(4" WIDE) (TS-24)	LF	18,812.00
856(A)	8535	TRAFFIC STRIPE(MULTI-POLYMER)(6" WIDE) (SP-2)(TS-25)	LF	489,455.00
856(A)	8540	TRAFFIC STRIPE(MULTI-POLYMER)(8" WIDE) (TS-26)	LF	38,447.00
856(A)	8548	TRAFFIC STRIPE(MULTI-POLYMER)(12" WIDE) (TS-27)	LF	29,770.00
856(A)	8555	TRAFFIC STRIPE(MULTI-POLYMER)(24" WIDE) (TS-28)	LF	5,742.00
856(B)	8860	TRAFFIC STRIPE(MULTI-POLYMER)(ARROWS)	EA	381.00
856(B)	8880	TRAFFIC STRIPE(MULTI-POLYMER)(WORDS)	EA	23.00
857(F)	8006	PAVEMENT MARKING REMOVAL(TRAFFIC STRIPE) (TC-22,75)	LF	662,214.00
857(F)	8007	PAVEMENT MARKING REMOVAL(ARROWS)	EA	381.00
857(F)	8008	PAVEMENT MARKING REMOVAL(WORDS)	EA	19.00
857(F)	8009	PAVEMENT MARKING REMOVAL(SYMBOLS) (SP-4)	EA	72.00

PAY QUANTITY SCHEDULE				
0640 CONSTRUCTION				
PAY ITEM	CODE NO.		UNIT	QUANTITY
641	1552	MOBILIZATION	LSUM	1.00

TRAFFIC PAY QUANTITY NOTES

(TC-22) AMOUNT SHOWN IS AN APPROXIMATION AND THE ACTUAL AMOUNT OF REMOVAL, IF NECESSARY, SHALL BE DETERMINED BY THE ENGINEER. PRICE BID FOR PAVEMENT MARKING REMOVAL SHALL INCLUDE THE COST OF REMOVING STRIPE, ARROWS, WORDS AND SYMBOLS, AS SHOWN IN THE PLANS. THESE ITEMS MAY CONSIST OF PLASTIC, PAINT OR NON-REMOVABLE MARKING TAPE.

(TC-25) ALL CONSTRUCTION TRAFFIC CONTROL WILL BE IMPLEMENTED ACCORDING TO CONSTRUCTION PLANS, AND INSTALLED IN A MANNER APPROVED BY THE ENGINEER, IN ACCORDANCE WITH CHAPTER VI OF THE MANUAL ON UNIFORM TRAFFIC CONTROL DEVICES, (CURRENT EDITION), AND COMPLIANT WITH APPLICABLE O.D.O.T. STANDARD DRAWINGS. PRICE BID FOR THIS ITEM SHALL BE PAYMENT IN FULL FOR THE INSTALLATION, MAINTENANCE AND SUBSEQUENT REMOVAL OF ALL NECESSARY CONSTRUCTION TRAFFIC CONTROL DEVICES AND PAVEMENT MARKINGS REQUIRED FOR COMPLETION OF THE PROJECT.

ALL SIGNS AND BARRICADES, WHICH ARE SHOWN WITH TYPE 'A' LIGHTS IN THE STANDARD DRAWINGS SHALL HAVE THE CORRESPONDING LIGHT ATTACHED DURING NON-DAYLIGHT HOURS.

(TC-52) ANY USED TRUCK MOUNTED ATTENUATOR OR PORTABLE CHANGEABLE MESSAGE SIGN TO BE PLACED ON THIS PROJECT SHALL BE SUBJECT TO INSPECTION AND APPROVAL, BY

A101

THE OKLAHOMA DEPARTMENT OF TRANSPORTATION, TO ASSURE THAT THEY ARE IN GOOD WORKING CONDITION, PRIOR TO PLACEMENT ON THE PROJECT.

(TC-65) THE PRICE BID FOR THIS ITEM SHALL INCLUDE THE FOLLOWING:

- A. ONE OFFICIALLY MARKED OKLAHOMA HIGHWAY PATROL CAR (WHEN PROJECT INVOLVES A STATE OR FEDERAL HIGHWAY). IF AN OKLAHOMA HIGHWAY PATROL CAR IS NOT AVAILABLE, THEN A LOCAL CITY OR COUNTY LAW ENFORCEMENT VEHICLE IS TO BE USED. PRICE BID FOR THIS ITEM SHALL BE PAID ON A PER UNIT PER HOUR BASIS.
- B. ONE OKLAHOMA HIGHWAY LAW ENFORCEMENT OFFICER WITH JURISDICTIONAL AUTHORITY TO WRITE AND ISSUE TRAFFIC CITATIONS. IF AN OKLAHOMA HIGHWAY PATROL LAW OFFICER IS NOT AVAILABLE, THEN A LOCAL CITY OR COUNTY LAW ENFORCEMENT OFFICER IS TO BE USED. THE LAW ENFORCEMENT OFFICER SHALL BE INSURED, LICENSED AND BONDED, IF REQUIRED, BY THE CONTRACTOR. THIS OFFICER SHALL BE SPECIFICALLY APPROVED AND ASSIGNED TO THIS WORK ACTIVITY.
- C. THE CONTRACTOR SHALL MAKE ALL THE NECESSARY ARRANGEMENTS WITH THE OKLAHOMA HIGHWAY PATROL OR THE LAW ENFORCEMENT AGENCY TO PROVIDE THE REQUIRED LAW ENFORCEMENT ON THIS PROJECT.
- D. THE CONTRACTOR SHALL BE RESPONSIBLE FOR PROVIDING HIS ANTICIPATED WEEKLY SCHEDULE TO THE OKLAHOMA HIGHWAY PATROL OR THE LOCAL LAW AGENCY TWO WEEKS IN ADVANCE OF THE WORK. THE WORK SCHEDULE WILL BE SUBJECT TO THE APPROVAL OF THE ENGINEER.
- E. THE OKLAHOMA HIGHWAY PATROL OR THE LOCAL LAW ENFORCEMENT AGENCY WILL BE PAID FOR A MAXIMUM OF ONE (1) HOUR, PER WORK PERIOD, TO ALLOW FOR TRAVEL TO AND FROM THE OFFICER'S PERMANENT DUTY STATION AND THE WORK SITE. THIS WILL BE PAID ONE (1) TIME PER WORK PERIOD AS DEFINED BY THE CONTRACTOR IN AGREEMENT WITH THE ENGINEER.

(TC-70) THIS ITEM IS AN ESTIMATED QUANTITY TO BE USED AS DEEMED NECESSARY BY THE ENGINEER.

(TC-75) TEMPORARY PAVEMENT MARKINGS SHALL BE IN PLACE THE SAME DAY THAT EXISTING PAVEMENT MARKINGS ARE REMOVED FROM ANY ROADWAY OPEN TO TRAFFIC. ALSO, ALL TEMPORARY PAVEMENT MARKINGS SHALL BE REMOVED PRIOR TO THE INSTALLATION OF STRIPING.

(TC-76) ANY TRUCK MOUNTED ATTENUATOR USED ON THIS PROJECT SHALL HAVE PASSED ALL MANDATORY AND OPTIONAL TESTS LISTED IN NCHRP 350, TL-3 CRITERIA. THIS ITEM IS TO BE USED WHERE SHOWN IN THE STANDARD DRAWINGS OR AT THE DISCRETION OF THE ENGINEER ON SHADOW VEHICLES PROTECTING THE WORK AREAS AND TEMPORARY ROADSIDE HAZARDS.

(TC-77) TRUCK MOUNTED ATTENUATORS ARE TO BE INSTALLED ON NON-STATE OWNED TRUCKS HAVING A MINIMUM GROSS WEIGHT RATING OF 15,000 POUNDS. EACH OF THESE TRUCKS SHALL ALSO BE EQUIPPED WITH AN ARROW DISPLAY (TYPE B).

(TC-84) 10 CONSTRUCTION CALENDAR DAYS WERE USED TO COMPUTE THE SIGN DAY PAY ITEMS. THE AMOUNT OF CALENDAR DAYS USED TO COMPUTE THE SIGN DAY PAY ITEMS ARE AN ESTIMATED QUANTITY ONLY, BASED ON THE CURRENT O.D.O.T. AND SUGGESTED CONSTRUCTION SEQUENCE FOR THIS PROJECT. THESE ESTIMATED SIGN DAY QUANTITIES MAY CHANGE AS THE PROJECT'S CONSTRUCTION TRAFFIC

AT02

SIGN DAY QUANTITIES MAY CHANGE AS THE PROJECT'S CONSTRUCTION TRAFFIC CONTROL IS MODIFIED DURING CONSTRUCTION.

(TC-85) THESE SIGNS MUST BE ON THE OKLAHOMA DEPARTMENT OF TRANSPORTATION LIST OF APPROVED CHANGEABLE MESSAGE SIGNS. FOR A LIST OF THE APPROVED SIGNS GO TO THE OKLAHOMA DEPARTMENT OF TRANSPORTATION WEBSITE AT:  
<http://www.okladot.state.ok.us/traffic/qpl/index.php>

TRAFFIC SIGN PAY QUANTITY NOTES

- (TS-24) QUANTITY SHOWN INCLUDES 0 L.F. TRAFFIC STRIPE (MULTI-POLYMER)(WHITE) AND 18,812 L.F. TRAFFIC STRIPE (MULTI-POLYMER)(YELLOW) AND WILL BE MEASURED BY THE LINEAR FOOT OF FOUR INCH (4") WIDE TRAFFIC STRIPE.
- (TS-25) QUANTITY SHOWN INCLUDES 271,012 L.F. TRAFFIC STRIPE (MULTI-POLYMER)(WHITE) AND 16,023 L.F. TRAFFIC STRIPE (MULTI-POLYMER)(BLACK) AND WILL BE MEASURED BY THE LINEAR FOOT OF SIX INCH (6") WIDE TRAFFIC STRIPE.
- (TS-26) QUANTITY SHOWN INCLUDES 35,633 L.F. TRAFFIC STRIPE (MULTI-POLYMER)(WHITE) AND 2814 L.F. TRAFFIC STRIPE (MULTI-POLYMER)(YELLOW) AND WILL BE MEASURED BY THE LINEAR FOOT OF EIGHT INCH (8") WIDE TRAFFIC STRIPE.
- (TS-27) QUANTITY SHOWN INCLUDES 29,770 L.F. TRAFFIC STRIPE (MULTI-POLYMER)(WHITE) AND 0 L.F. TRAFFIC STRIPE (MULTI-POLYMER)(YELLOW) AND WILL BE MEASURED BY THE LINEAR FOOT OF TWELVE INCH (12") WIDE TRAFFIC STRIPE.
- (TS-28) QUANTITY SHOWN INCLUDES 5742 L.F. TRAFFIC STRIPE (MULTI-POLYMER)(WHITE) AND WILL BE MEASURED BY THE LINEAR FOOT OF TWENTY-FOUR INCH (24") WIDE TRAFFIC STRIPE.

SPECIAL NOTES

- (SP-1) PORTABLE CHANGEABLE MESSAGE SIGNS TO BE PLACED WHERE DEEMED NECESSARY BY THE ENGINEER.
- (SP-2) QUANTITY SHOWN INCLUDES 202,420 L.F. TRAFFIC STRIPE (MULTI-POLYMER)(YELLOW) AND WILL BE MEASURED BY THE LINEAR FOOT OF SIX INCH (6") WIDE TRAFFIC STRIPE.
- (SP-3) QUANTITY INCLUDES 76 PREFORMED ROUTE SHEILDS PAVEMENT MARKERS.
- (SP-4) QUANTITY INCLUDES REMOVAL OF 72 ROUTE SHIELD PAVEMENT MARKERS.

AT03

**I-40 and Morgan Road Interchange**

**CONTROL SECTION: 40- 09- 05**

**Canadian County, I-40 and Morgan Road Interchange (Ramps and Bridge).**

Item Description	Unit	Quantity
Traffic Stripe (multi-polymer) (white)(6" wide)	LF	19,333
Traffic Stripe (multi-polymer) (yellow)(6" wide)	LF	5,446
Traffic Stripe (multi-polymer) (black)(6" wide)	LF	1,514
Traffic Stripe (multi-polymer) (white))8" wide)	LF	2,547
Traffic Stripe (multi-polymer) (white)(12" wide)	LF	7,821
Traffic Stripe (multi-polymer) (white)(24" wide)	LF	180
Stop Bar		
Traffic Stripe (multi-polymer) (white)(24" wide)	LF	428
Continental Cross Walk		
Traffic Stripe (multi-polymer) (white)(Arrows-single)	EA	30
Pavement marking removal (traffic stripe)(paint) (plastic) (multi-polymer)(4" wide)	LF	24,780
Pavement marking removal (symbol, word or arrow - single or double)	EA	30
Pavement marking removal (traffic stripe)(paint) (plastic)(multi-polymer)(8" wide)	LF	2,457
Pavement marking removal (traffic stripe)(paint) (plastic)(multi-polymer)(12" wide)	LF	782
Pavement marking removal (traffic stripe)(paint) (plastic)(multi-polymer)(24" wide)	LF	180

Tool



I-40 and Morgan Road Interchange (Ramps and Bridge)

T002

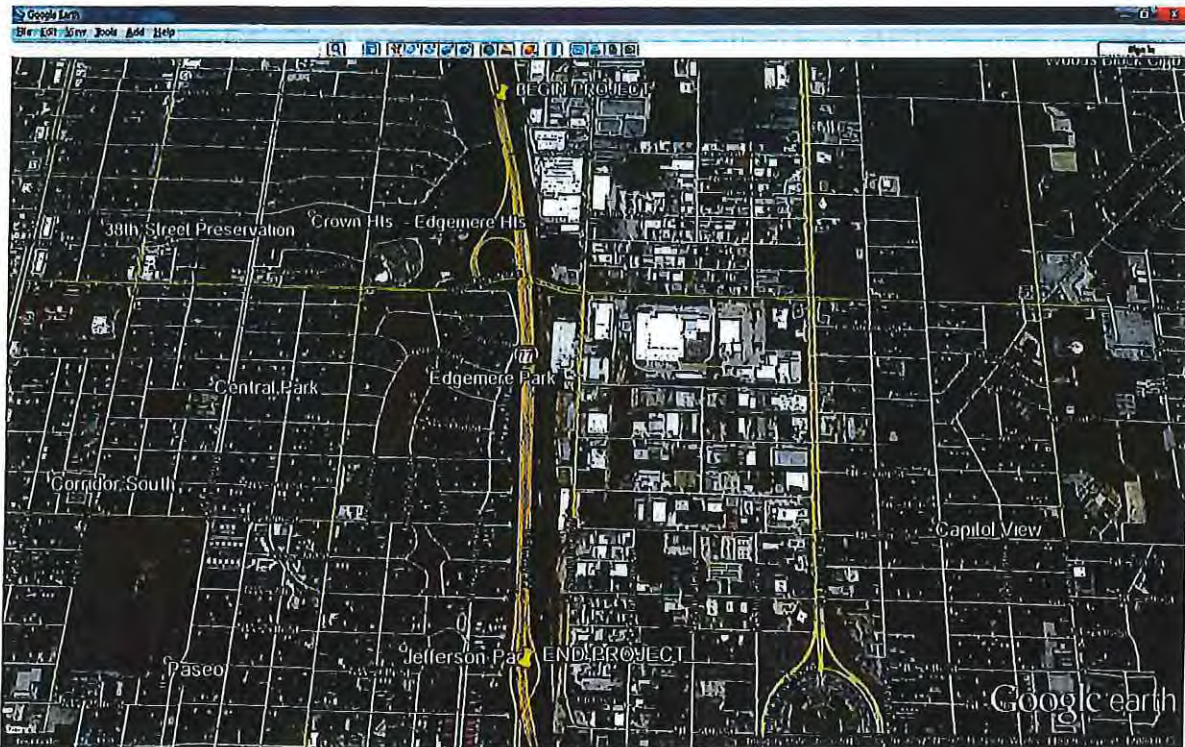
**I-235  
CONTROL SECTION: 235-55-42**

From 0.43 miles north of 36th Street south 1.26 miles to 23rd Street  
(including 36th Street and 23rd Street on and off ramps)

Item Description	Unit	Quantity
Traffic Stripe (multi-polymer) (white)(6" wide)	LF	33,223
Traffic Stripe (multi-polymer) (yellow)(6" wide)	LF	23,375
Traffic Stripe (multi-polymer) (black)(6" wide)	LF	8,949
Traffic Stripe (multi-polymer) (white)(8" wide)	LF	5,261
Traffic Stripe (multi-polymer) (white)(12" wide)	LF	4790
Traffic Stripe (multi-polymer) (white)(24" wide Stop Bar	LF	171
Traffic Stripe (multi-polymer) (white)(24" wide) Continental Cross Walk	LF	128
Traffic Stripe (multi-polymer) (white)(arrows-single)	EA	22
Traffic Stripe (multi-polymer) (white)(arrows- double)	EA	9
Pavement marking removal (traffic stripe) (paint) (plastic) (multi-polymer)(4" wide)	LF	56,598
Pavement marking removal (symbol, word or arrow - single or double)	EA	31
Pavement marking removal (traffic stripe) (paint)(plastic)(multi-polymer)(8" wide)	LF	7,401
Pavement marking removal (traffic stripe) stripe)(paint)(plastic)(multi-polymer)(24" wide)	LF	299

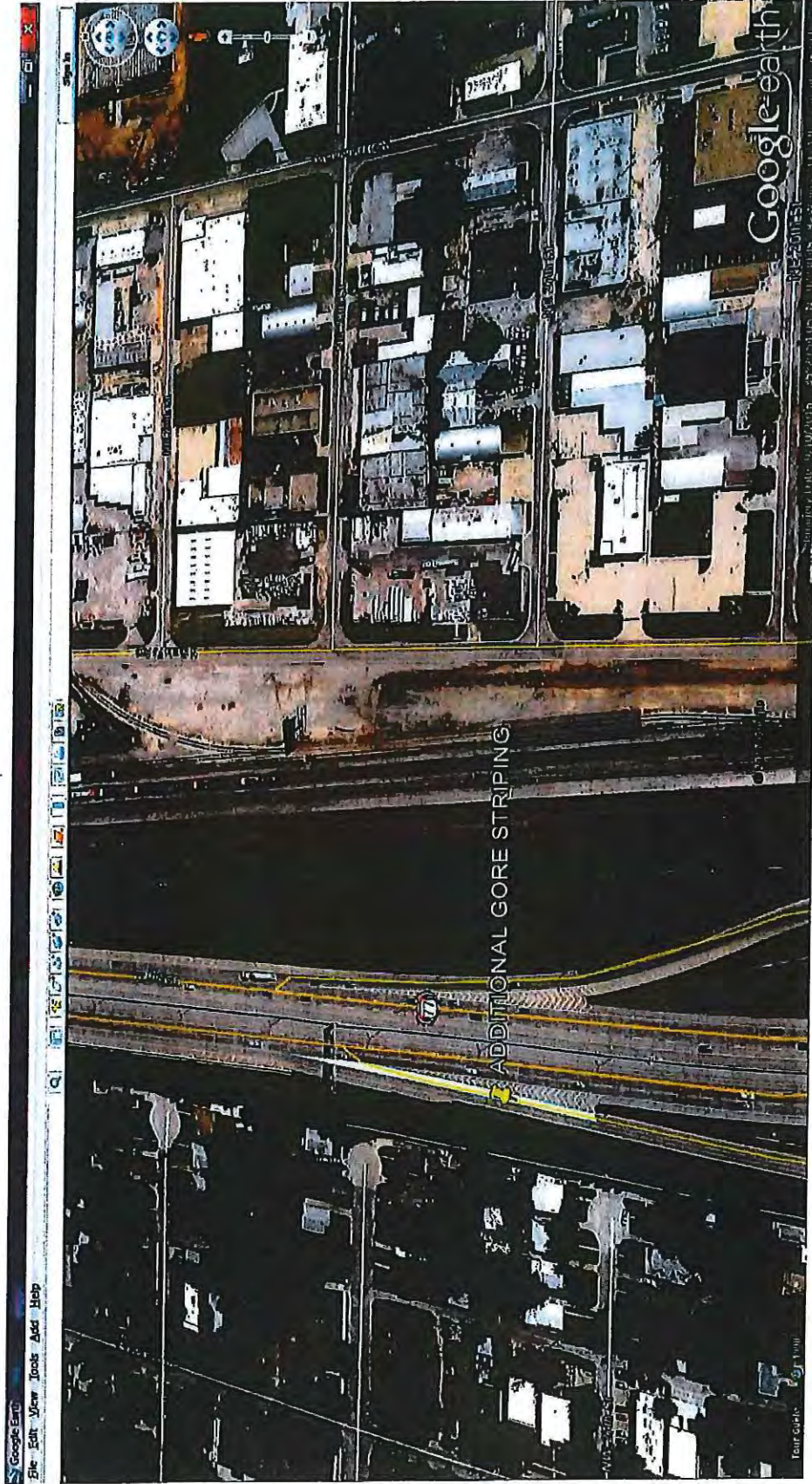
T003





I-235: FR. 0.43 MILES NORTH OF 36TH STREET SOUTH 1.26 MILES (TO INCLUDE 36TH STREET ON AND OFF RAMPS AND 23RD STREET ON AND OFF RAMPS)

T004



ADDITIONAL GORE STRIPING: 23RD STREET OFF RAMP FROM SOUTHBOUND I-235

T005

**I-240  
CONTROL SECTION: 240-55-71**

**Beginning 0.22 miles east of I-44/I-240 interchange east 3.29 miles Santa Fe Avenue  
(includes all on and off ramps at May Avenue, Penn Avenue,  
Western Avenue and Walker Avenue)**

<b>Item Description</b>	<b>Unit</b>	<b>Quantity</b>
Traffic Stripe (multi-polymer) (white)(6" wide)	LF	58,648
Traffic Stripe (multi-polymer) (yellow)(6" wide)	LF	36,744
Traffic Stripe (multi-polymer) (white)(8" wide)	LF	12,734
Traffic Stripe (multi-polymer) (white)(12" wide)	LF	6,859
Traffic Stripe (multi-polymer) (white)(24" wide)	LF	72
Stop Bar		
Traffic Stripe (multi-polymer) (white)(Arrows-Single)	EA	13
Traffic Stripe (multi-polymer) (white)(Arrows-Double)	EA	2
Pavement marking removal (traffic stripe)(paint) (multi-polymer)(4" wide)	LF	98,805
Pavement marking removal (symbol, word or arrow - single or double)	EA	15
Pavement marking removal (traffic stripe)(paint) (plastic)(multi-polymer)(8" wide)	LF	20,687
Pavement marking removal (traffic stripe)(paint) (plastic)(multi-polymer)(24" wide)	LF	72

T006

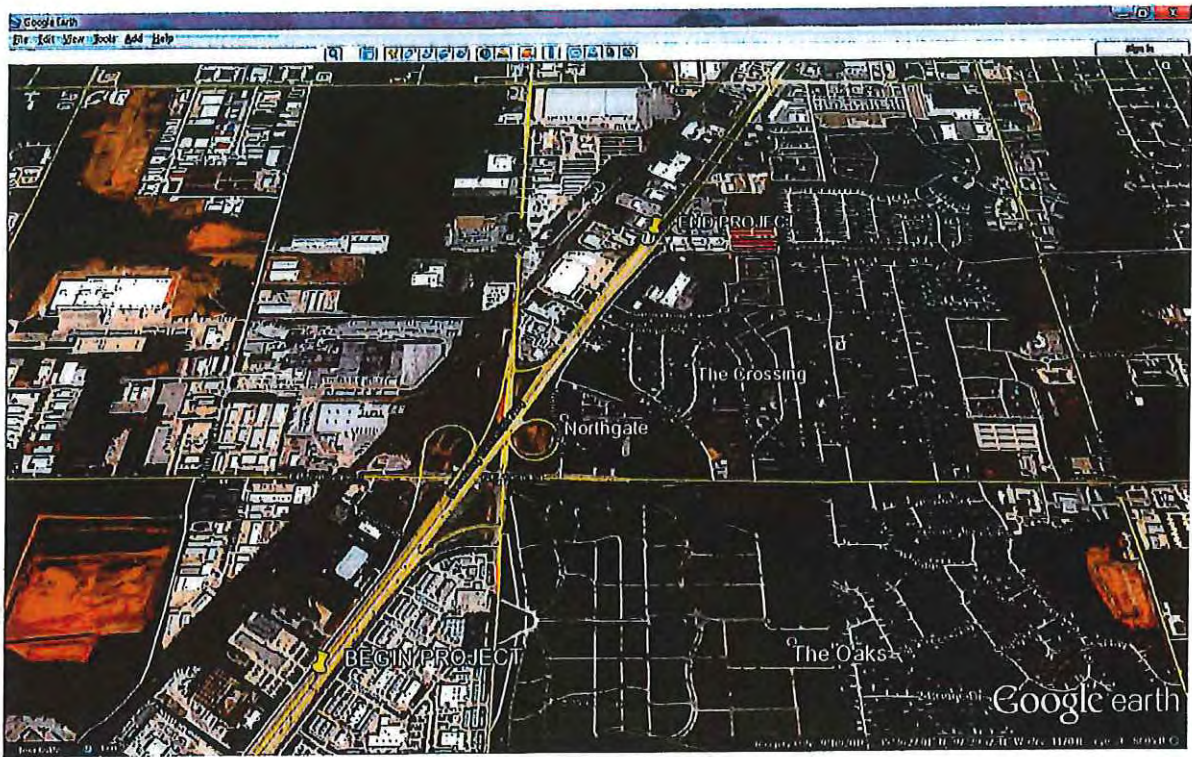


I-240: BEGINNING 0.22 MILES EAST OF I-44/I-240 INTERCHANGE EAST APPROXIMATELY  
3.29 MILES TO SANTA FE AVENUE

T007

US-77		
Control Section #: 77-55-67		
From 0.38 miles north of the Kilpatrick Turnpike north 1.00 mile to Comfort Drive		
Item Description	Unit	Quantity
Traffic Stripe (multi-polymer) (white)(6" wide)	LF	17,313
Traffic Stripe (multi-polymer) (yellow)(6" wide)	LF	14,675
Traffic Stripe (multi-polymer) (black)(6" wide)	LF	5,484
Traffic Stripe (multi-polymer) (white) (8" wide)	LF	5,697
Traffic Stripe (multi-polymer) (white)(12" wide)	LF	2,032
Traffic Stripe (multi-polymer) (white)(24" wide)	LF	44
Stop Bar		
Traffic Stripe (multi-polymer) (white)	EA	30
Arrows, Single		
Pavement marking removal (traffic stripe)(paint) (plastic)(multi-polymer)(4" wide)	LF	37,244
Pavement marking removal (symbol, word or arrow - single or double)	EA	30
Pavement marking removal (traffic stripe)(paint)(plastic)(multi-polymer)(8" wide)	LF	5,697
Pavement marking removal (traffic stripe)(paint)(plastic)(multi-polymer)(24" wide)	LF	44

T008

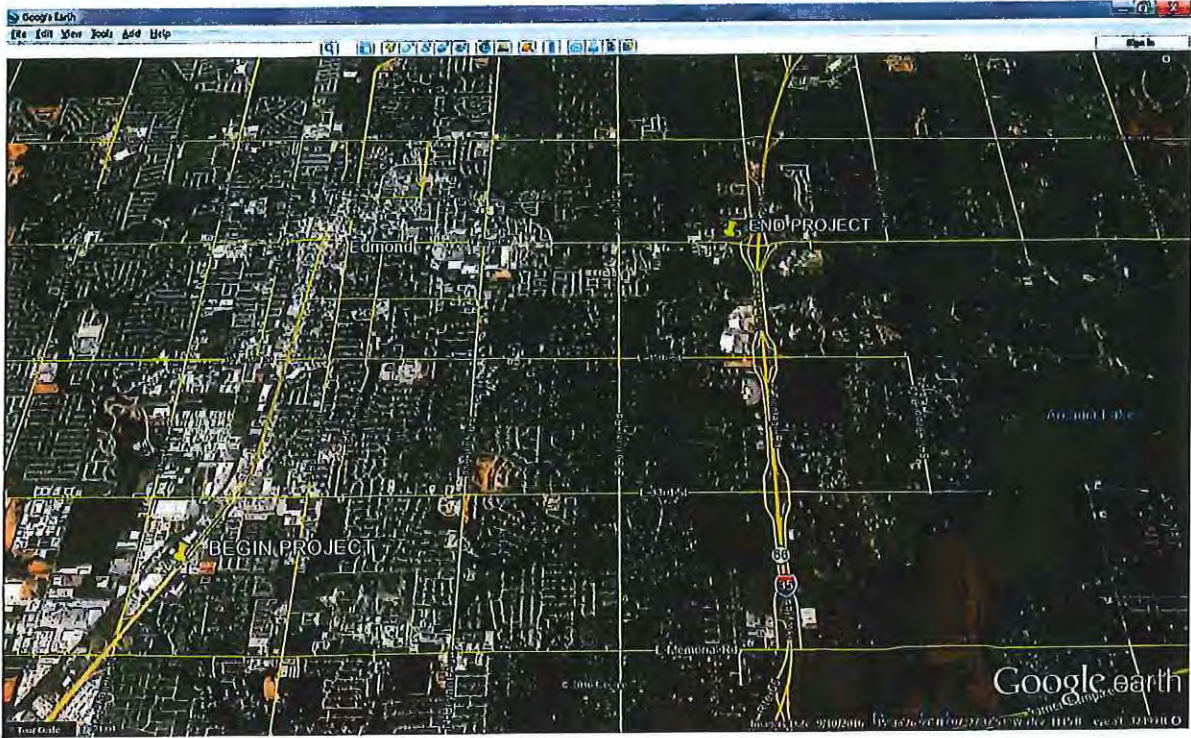


US-77: FROM 0.38 MILES NORTH OF THE KILPATRICK TURNPIKE NORTH 1.00 MILES TO COMFORT DRIVE

T009

<b>US-77</b>		
<b>Control Section #: 77-55-67</b>		
<b>From Comfort Drive north and east to Meline Drive in Edmond</b>		
Item Description	Unit	Quantity
Traffic Stripe (multi-polymer) (yellow)(4" wide)	LF	18,812
Traffic Stripe (multi-polymer) (white)(6" wide)	LF	46,691
Traffic Stripe (multi-polymer) (yellow)(6" wide)	LF	31,829
Traffic Stripe (multi-polymer) (white)(8" wide)	LF	742
Traffic Stripe (multi-polymer) (yellow)(8" wide)	LF	2,007
Traffic Stripe (multi-polymer) (white)(12" wide)	LF	296
Traffic Stripe (multi-polymer) (white) 24" wide Stop Bar	LF	1,193
Traffic Stripe (multi-polymer) (white) 24" wide Continental Cross Walk	LF	3,428
Traffic Stripe (multi-polymer) (white) Arrows, Single	EA	203
Traffic Stripe (multi-polymer) (white) Arrows, Double	EA	3
Pavement marking removal (traffic stripe)(paint) (plastic) (multi-polymer)(4" wide)	LF	97,332
Pavement marking removal (symbol, word,) or arrow - single or double)	EA	206
Pavement marking removal (traffic stripe)(paint) (plastic)(multi-polymer)(8" wide)	LF	2,749
Pavement marking removal (traffic stripe)(paint) (plastic)(multi-polymer)(24" wide)	LF	4,626

*T010*



US-77: FROM COMFORT DRIVE NORTH AND EAST TO MELINE DRIVE

T011

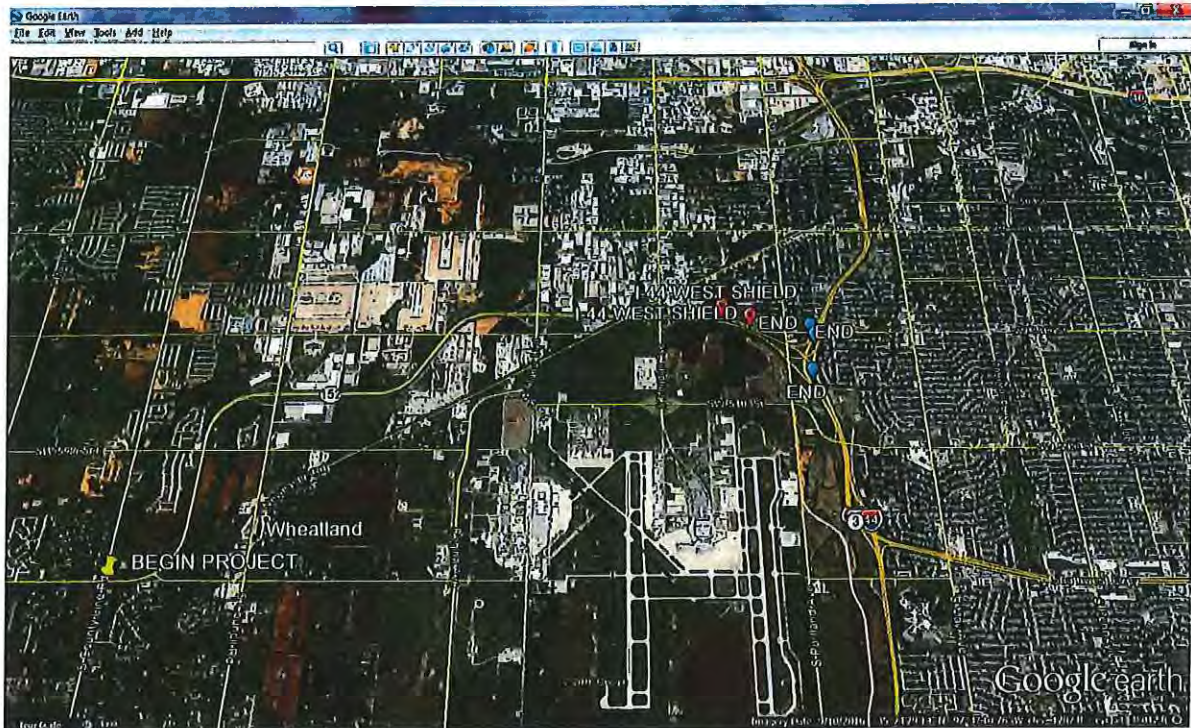


**SH-152  
CONTROL SECTION: 152-55-52**

From the Canadian/Oklahoma county line east 6.49 miles to I-44 (to include all on and off ramps at Council Road, MacArthur Blvd and Meridian Avenue; include 4 route shield pavement markers and 4 words (2-EAST and 2-WEST))

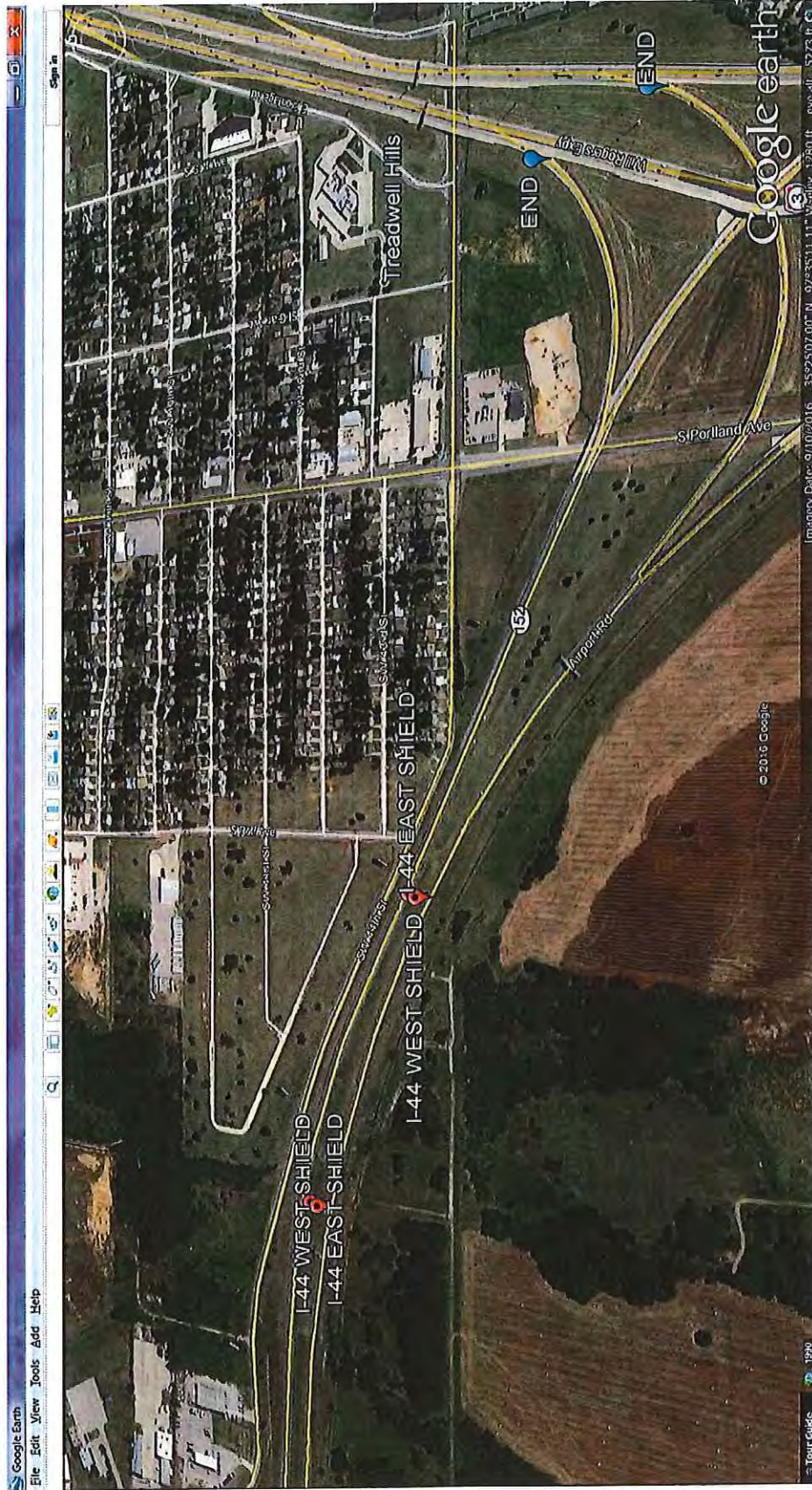
Item Description	Unit	Quantity
Traffic Stripe (multi-polymer) (white)(6" wide)	LF	95,432
Traffic Stripe (multi-polymer) (yellow)(6" wide)	LF	90,351
Traffic Stripe (multi-polymer) (white)(8" wide)	LF	8,652
Traffic Stripe (multi-polymer) (yellow)(8" wide)	LF	807
Traffic Stripe (multi-polymer) (white)(12" wide)	LF	7,972
Traffic Stripe (multi-polymer) (white) 24" wide Stop Bar	LF	186
Traffic Stripe (multi-polymer) (white) Arrows, Single	EA	69
Traffic Stripe (multi-polymer) (white) (word) Includes Letters & Numbers (8' high)	EA	4
Traffic Stripe (Pre-Formed) (symbols) (Shields Interstate, US & Highway Route Shields) The route shields shall be Pre-Formed Thermoplastic in accordance with the Manufacturer's Specification 8x20	EA	4
Pavement marking removal (traffic stripe) (paint) (plastic) (multi-polymer)(4" wide)	LF	202,385
Pavement marking removal (symbol, word or arrow - single or double)	EA	92
Pavement marking removal (traffic stripe)(paint)(plastic)(multi-polymer)(8" wide)	LF	16,045
Pavement marking removal (traffic stripe)(paint)(plastic)(multi-polymer)(24" wide)	LF	186

T012



SH-152: FR. THE CANADIAN/OKLAHOMA COUNTY LINE EAST 6.49 MILES TO I-44(TO INCLUDE ALL ON AND OFF RAMPS AT COUNCIL ROAD, MACARTHUR BOULEVARD, MERIDIAN BOULEVARD, I-44 WB OFF RAMP TO SH-152 AND SH-152 EB RAMPS TO I-44 EB AND I-44 WB.

T013

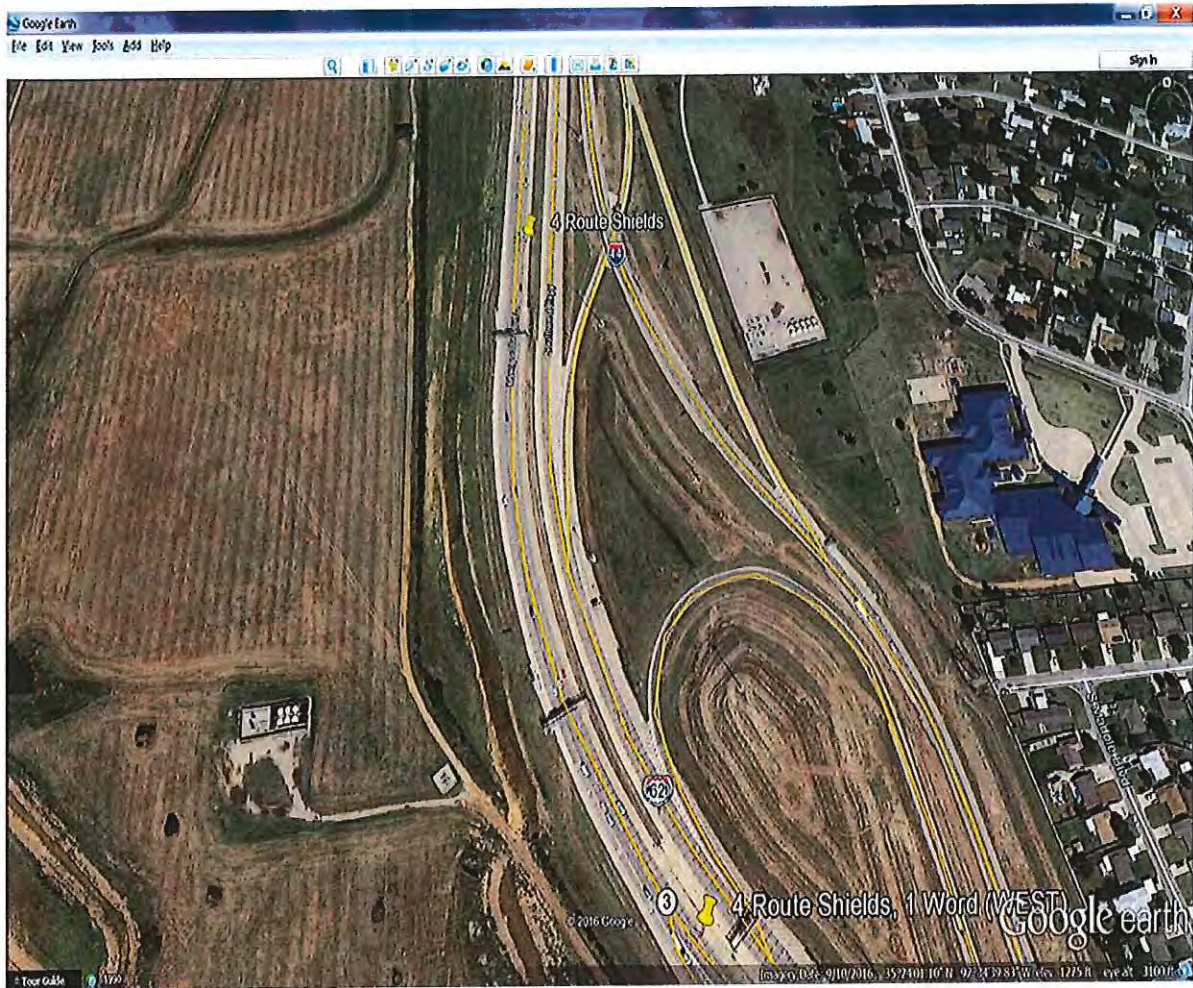


TO 14

SH-152 ROUTE SHIELDS AND WORDS

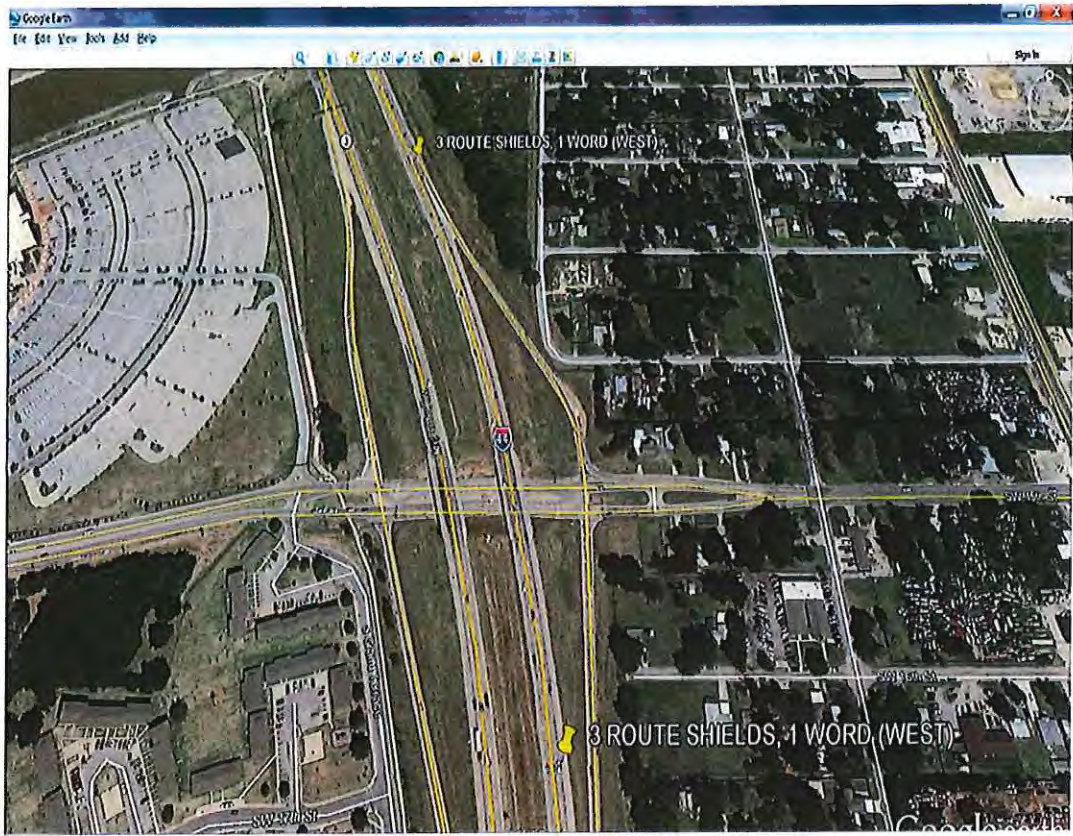
<b>Various Locations</b>		
<b>Preformed Route Shield Symbols at various locations in Oklahoma County.</b>		
<b>Item Description</b>	<b>Unit</b>	<b>Quantity</b>
Traffic Stripe (multi-polymer) (white) (word)	EA	18
Includes Letters & Numbers (8' high)		
Traffic Stripe (Pre-Formed) (symbols)	EA	72
(Shields Interstate, US & Highway Route		
Shields) The route shields shall be		
Pre-Formed Thermoplastic in accordance		
with the Manufacturer's Specification 8x20		
Pavement marking removal (symbol,	EA	95
word or arrow - single or double)		

T015



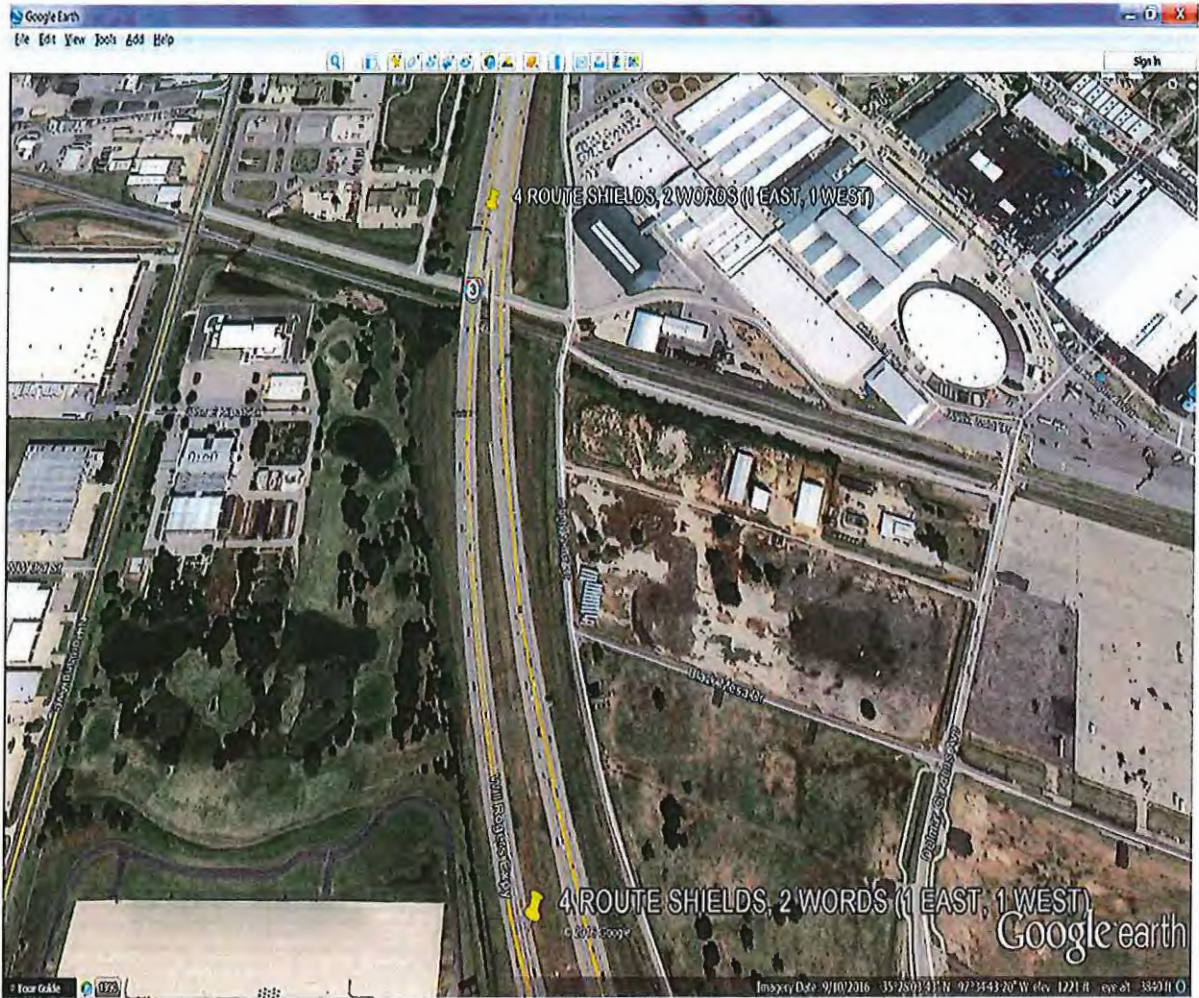
I-44 WB AT THE I-44/I-240 INTERCHANGE

T016



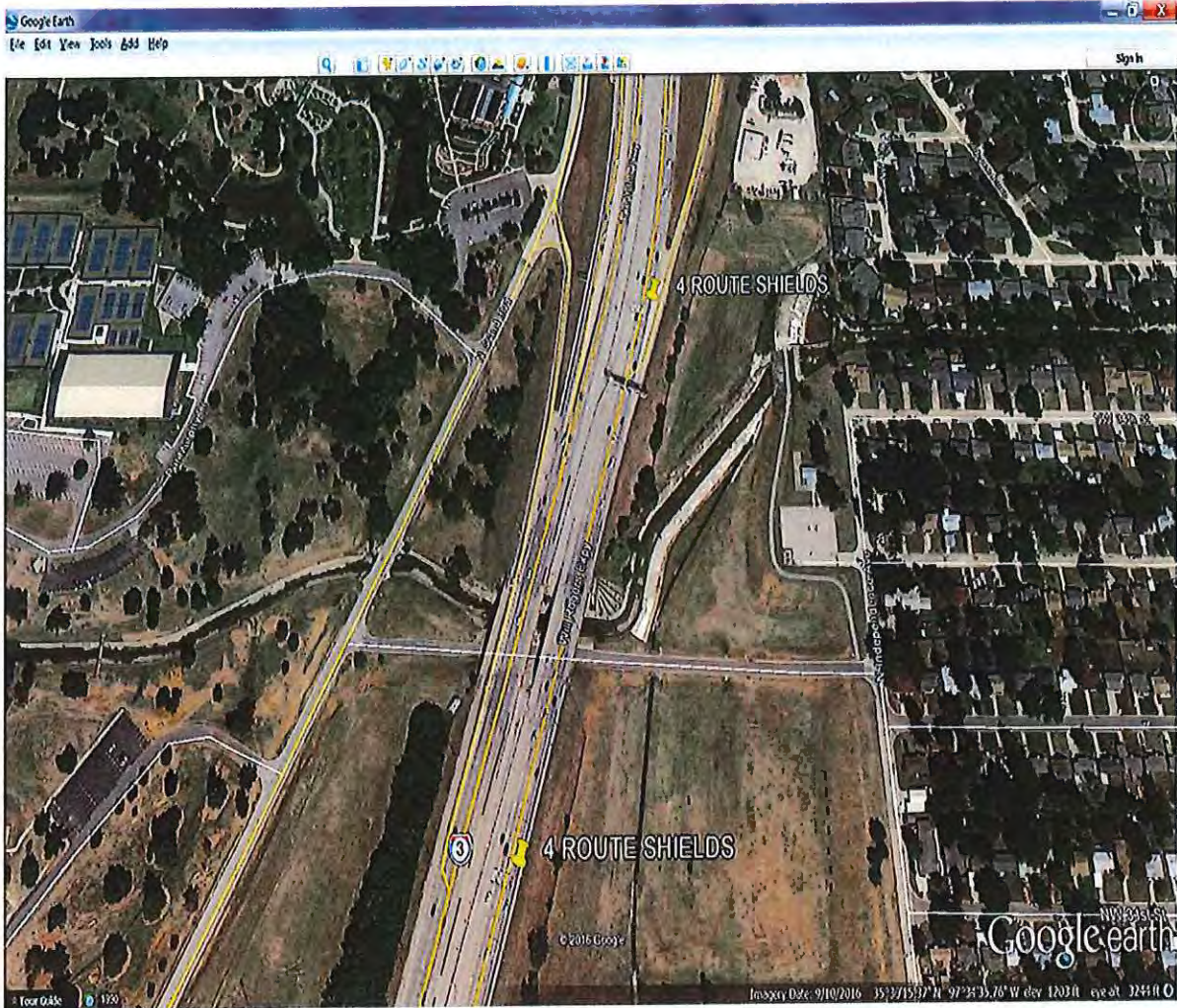
I-44 EB AT SE 15TH STREET

T017



I-44 WESTBOUND NORTH OF I-40/I-44 JCT

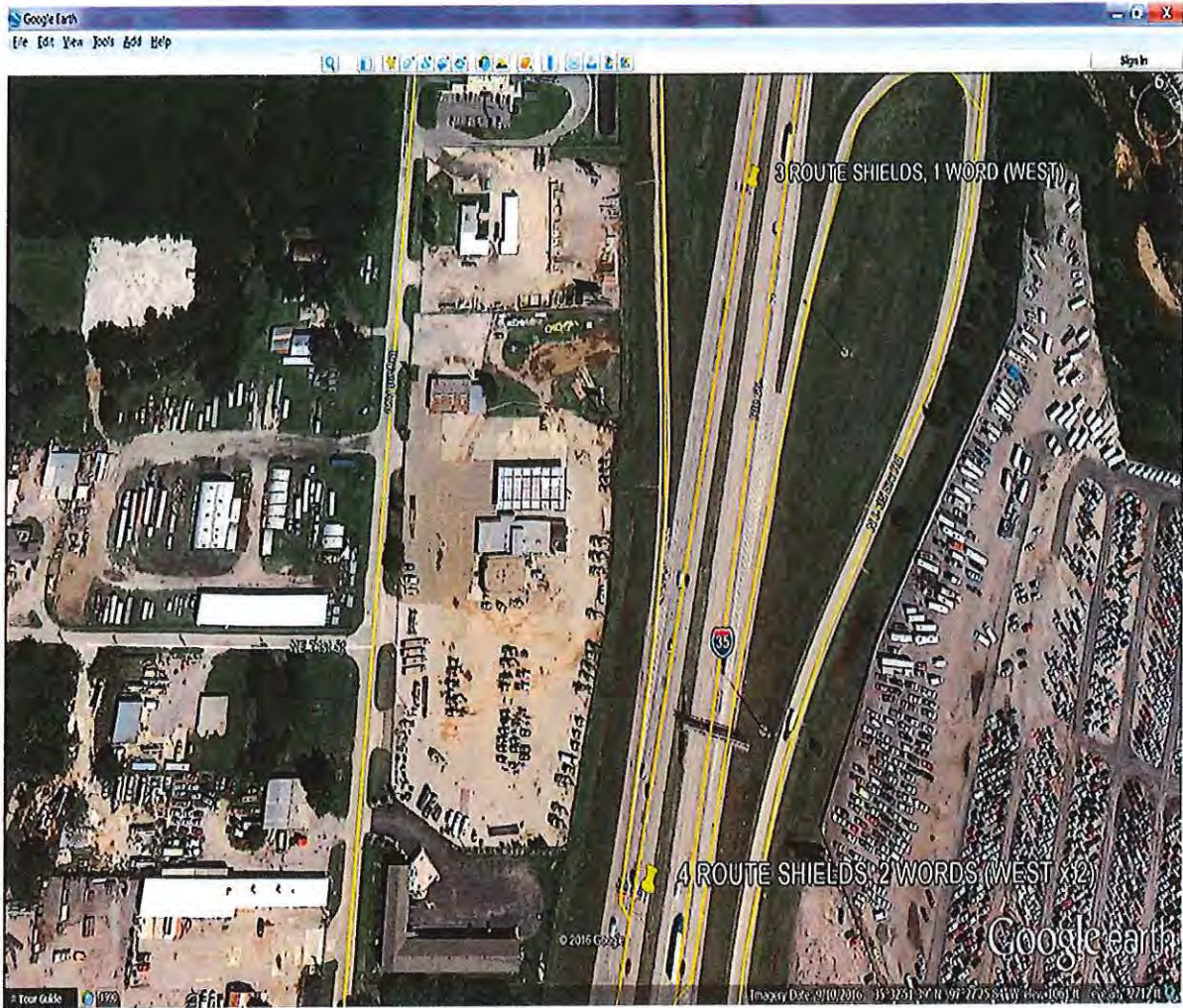
TO18



I-44 EASTBOUND NORTH OF 27TH STREET

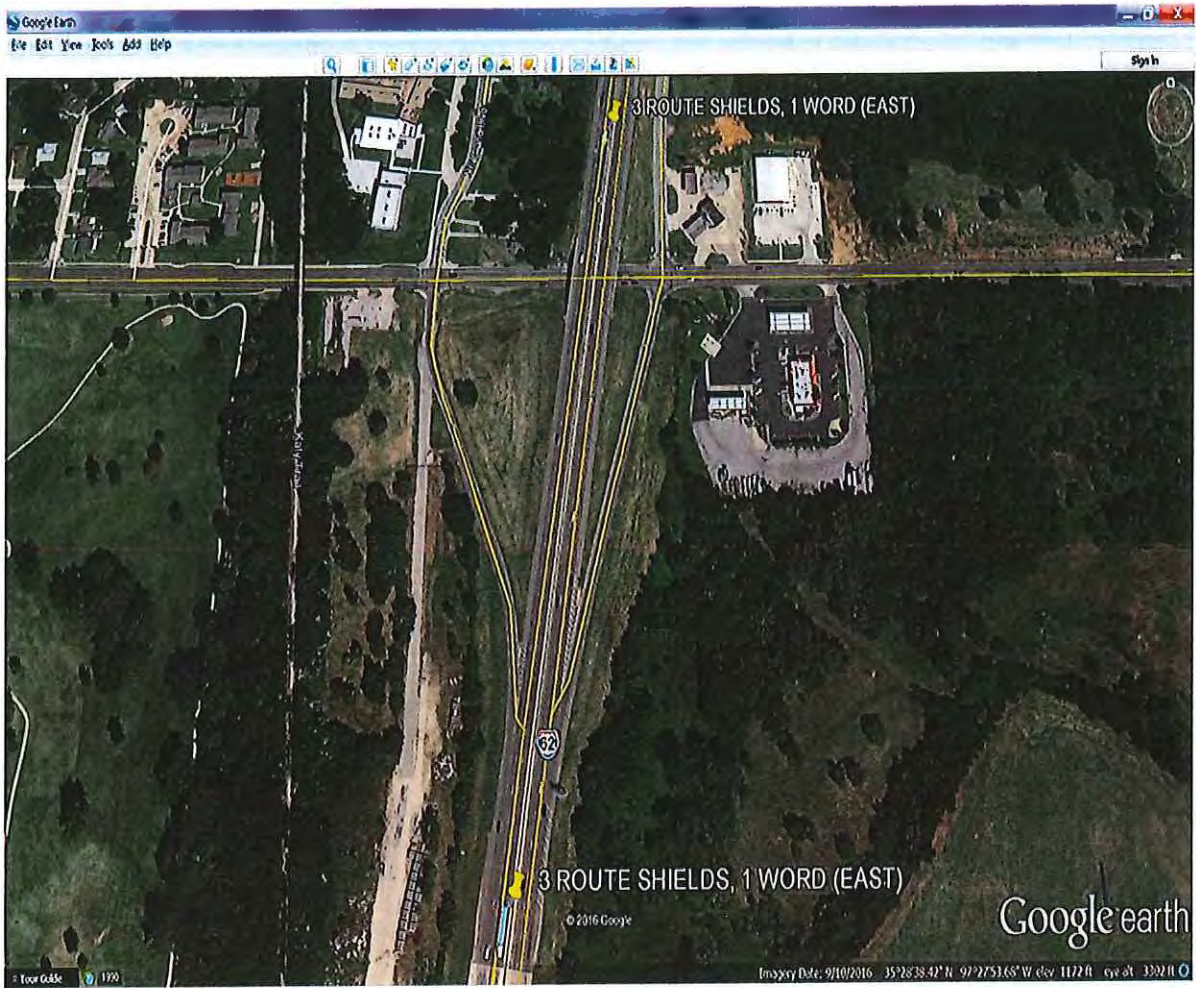
T019





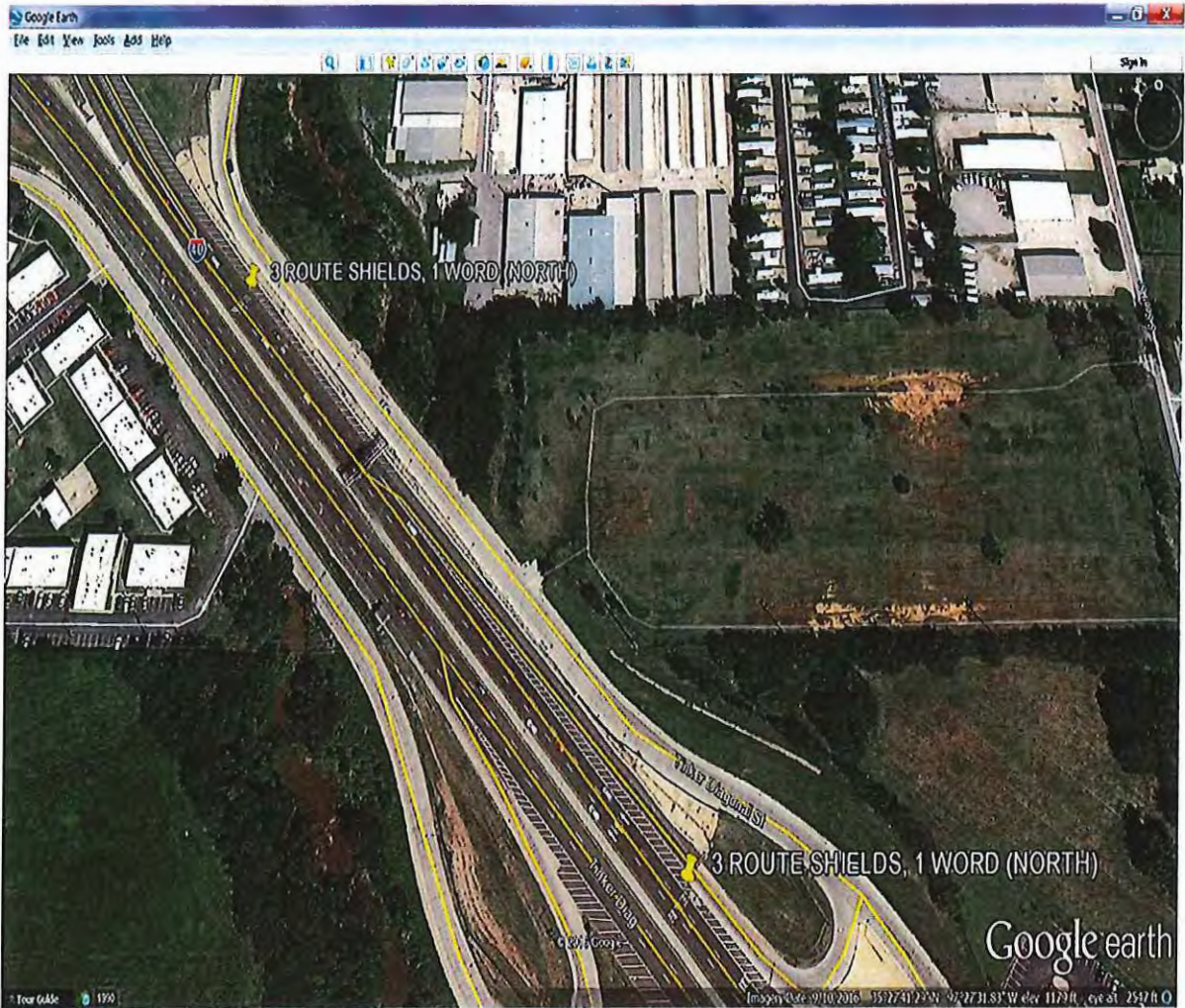
I-35 SOUTHBOUND SOUTH OF WILSHIRE

T020



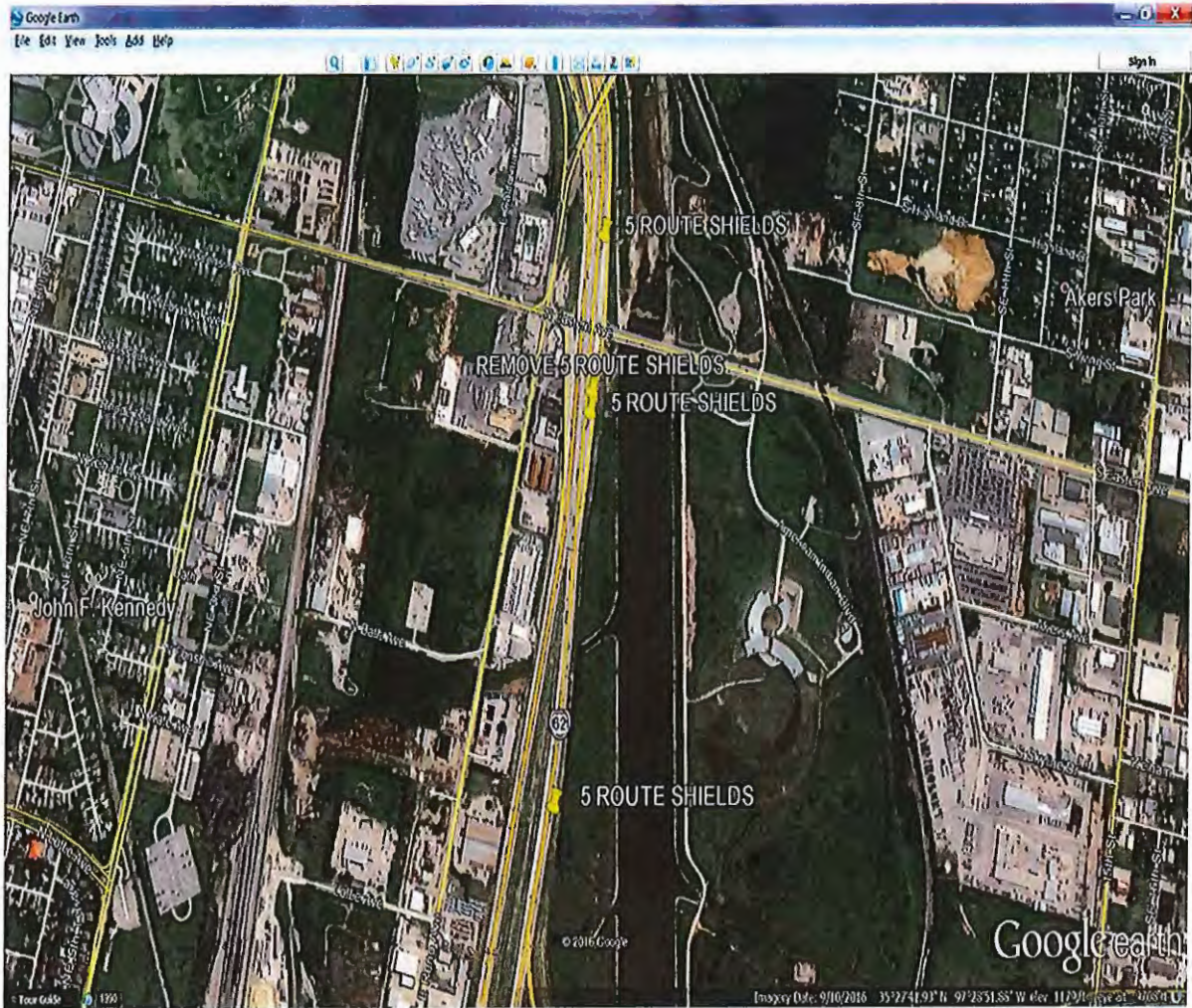
I-35 SOUTHBOUND AT 10TH STREET

T021



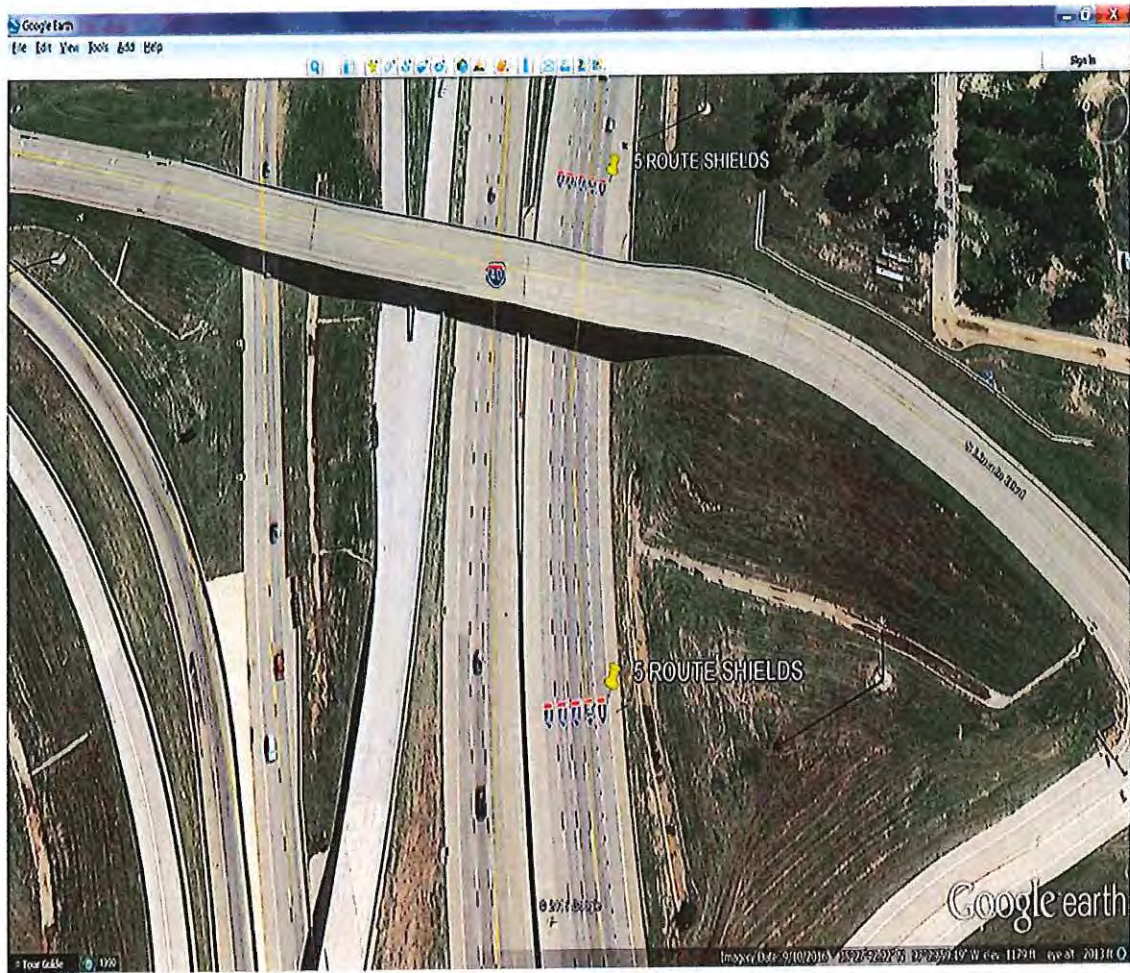
I-40 WESTBOUND AT THE FORT SMITH JUNCTION

TO 22



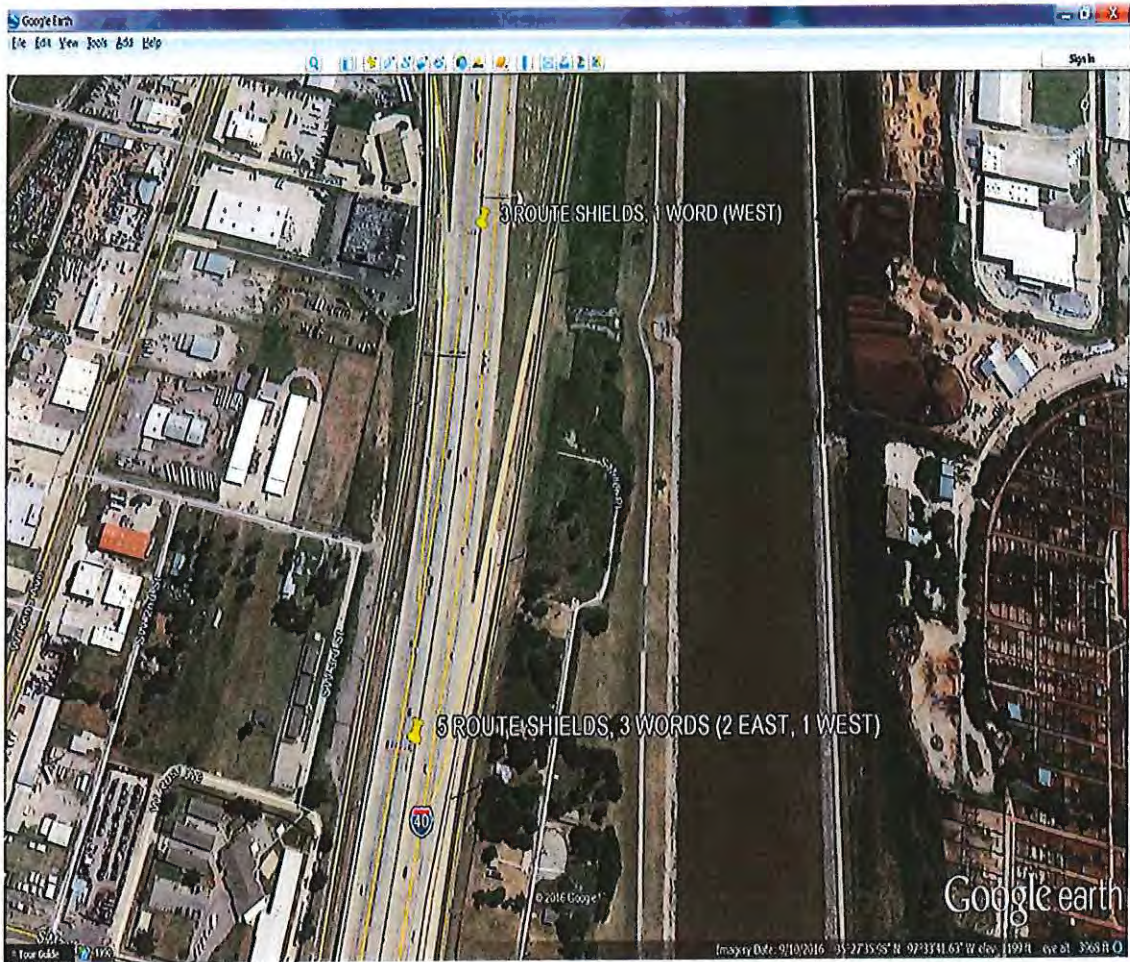
I-40 EASTBOUND BETWEEN I-40/I-35/I-235 INTERCHANGE AND THE FORT SMITH JUNCTION

T023



I-40 EASTBOUND JUST BEFORE THE DALLAS JUNCTION. REMOVE BOTH I-235 SHIELDS AND REPLACE WITH 2 I-40 SHIELDS

TO-24



I-40 WESTBOUND BETWEEN AGNEW/VILLA AND I-40/I-44 INTERCHANGE

T025